




Primary 4 - Term 4 Science (Catholic High)

-  Duplicate
-  Print
-  Delete

 Assign Test

Test Introduction

[+ Add Introduction](#)

64 Questions (80 Points)

Question Bank: 19,950 Questions 

Test Questions | 1 Test Assignment

Question 1

Primary 4 Science » Primary 4 Science (Term 4)

2 pts

A millipede coils itself into a tight spiral when touched.



This shows that the millipede is a living thing because it can _____.

- A) grow
- B) breathe
- C) respond
- D) reproduce

Question Type: Multiple Choice
Randomize Answers: No
Date Added: Wed 2nd Dec 2020
Last Modified: N/A
QID#: 25,182,623

 Answers |  Edit |  Duplicate |  Used In |  Reorder

[Remove From Test](#)

Question 2

Primary 4 Science » Primary 4 Science (Term 4)

2 pts

Which one of the animals shown below is not an insect?

(1)



(2)



(3)



(4)



- A) 1
 B) 2
 C) 3
 ✓ D) 4

Question Type: Multiple Choice
Randomize Answers: No
Date Added: Wed 2nd Dec 2020
Last Modified: N/A
QID#: 25,182,631

[Answers](#) | [Edit](#) | [Duplicate](#) | [Used In](#) | [Reorder](#)

[Remove From Test](#)

Question 3

Primary 4 Science » Primary 4 Science (Term 4)

2 pts

Which one of the following objects can be bent easily without breaking?

(1)



a sheet of glass

(2)



a wooden stick

(3)



a plastic fork

(4)



a towel

- A) 1
 B) 2
 C) 3

✓ D) 4

Question Type: Multiple Choice
Randomize Answers: No
Date Added: Wed 2nd Dec 2020
Last Modified: N/A
QID#: 25,182,635

[↗ Answers](#) |
 [✎ Edit](#) |
 [📄 Duplicate](#) |
 [📌 Used In](#) |
 [⬇ Reorder](#)

[Remove From Test](#)

Question 4

Primary 4 Science » Primary 4 Science (Term 4)

2 pts

In which part of the digestive system is food absorbed into the blood?

- A) gullet
- B) stomach
- C) large intestine
- ✓ D) small intestine

Question Type: Multiple Choice
Randomize Answers: No
Date Added: Wed 2nd Dec 2020
Last Modified: N/A
QID#: 25,182,643

[↗ Answers](#) |
 [✎ Edit](#) |
 [📄 Duplicate](#) |
 [📌 Used In](#) |
 [⬇ Reorder](#)

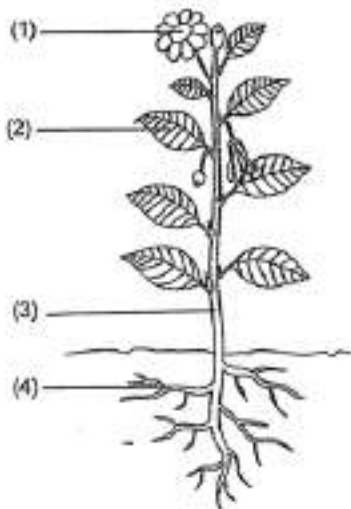
[Remove From Test](#)

Question 5

Primary 4 Science » Primary 4 Science (Term 4)

2 pts

Which part, (1), (2), (3) or (4), makes food for the plant?



- A) 1
- ✓ B) 2
- C) 3

D) 4

Question Type: Multiple Choice
Randomize Answers: No
Date Added: Wed 2nd Dec 2020
Last Modified: N/A
QID#: 25,182,651

[Answers](#) | [Edit](#) | [Duplicate](#) | [Used In](#) | [Reorder](#)

[Remove From Test](#)

Question 6

Primary 4 Science » Primary 4 Science (Term 4)

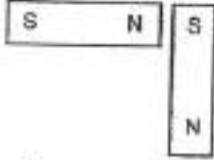
2 pts

In which one of the following will the two magnets push each other away?

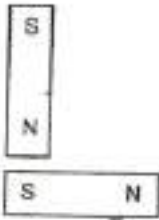
(1)



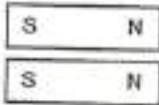
(2)



(3)



(4)



- A) 1
B) 2
C) 3
✓ D) 4

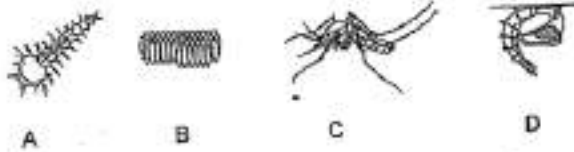
Question Type: Multiple Choice
Randomize Answers: No
Date Added: Wed 2nd Dec 2020
Last Modified: N/A
QID#: 25,182,655

Question 7

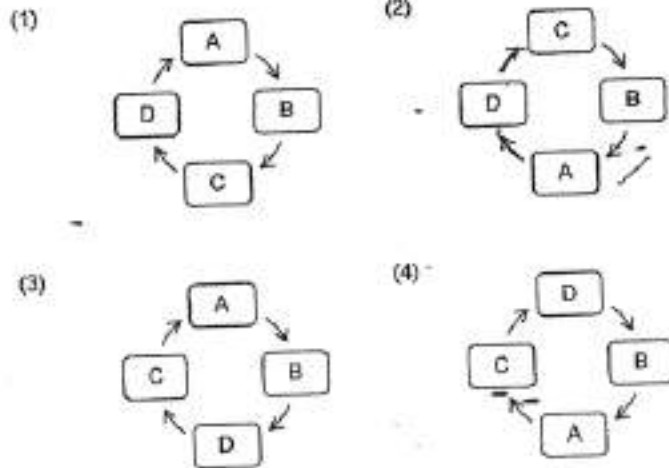
Primary 4 Science » Primary 4 Science (Term 4)

2 pts

A, B, C and D are the various stages in the life cycle of a mosquito.



Which one of the following correctly shows the life cycle of a mosquito?



- A) 1
 B) 2
 C) 3
 D) 4

Question Type: Multiple Choice
Randomize Answers: No
Date Added: Wed 2nd Dec 2020
Last Modified: N/A
QID#: 25,182,658

Question 8

Primary 4 Science » Primary 4 Science (Term 4)

2 pts

Which of the following properties is correct for both air and water?

- A) They can be seen
 B) They take up space
 C) They have definite shapes
 D) They have definite volume

Question Type: Multiple Choice

Randomize Answers: No
 Date Added: Wed 2nd Dec 2020
 Last Modified: N/A
 QID#: 25,182,671

[Answers](#) | [Edit](#) | [Duplicate](#) | [Used In](#) | [Reorder](#)

[Remove From Test](#)

Question 9

Primary 4 Science » Primary 4 Science (Term 4)

2 pts

Which one of the following is a source of light?

(1)



eyes

(2)



lamp

(3)



mirror

(4)



moon

- A) 1
 ✓ B) 2
 C) 3
 D) 4

Question Type: Multiple Choice
 Randomize Answers: No
 Date Added: Wed 2nd Dec 2020
 Last Modified: N/A
 QID#: 25,182,677

[Answers](#) | [Edit](#) | [Duplicate](#) | [Used In](#) | [Reorder](#)

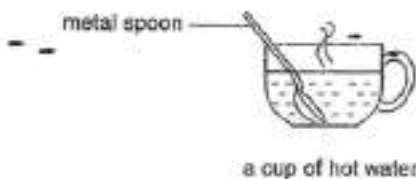
[Remove From Test](#)

Question 10

Primary 4 Science » Primary 4 Science (Term 4)

2 pts

Jason placed a metal spoon in a cup of hot water.



The spoon became hot after a while.

Which one of the following explains this?

- A) The cup lost heat to the spoon
 B) The spoon lost heat to the hot water

- C) The hot water gained heat from the spoon
 ✓ D) The spoon gained heat from the hot water

Question Type: Multiple Choice
Randomize Answers: No
Date Added: Wed 2nd Dec 2020
Last Modified: N/A
QID#: 25,182,684

Answers | Edit | Duplicate | Used In | Reorder

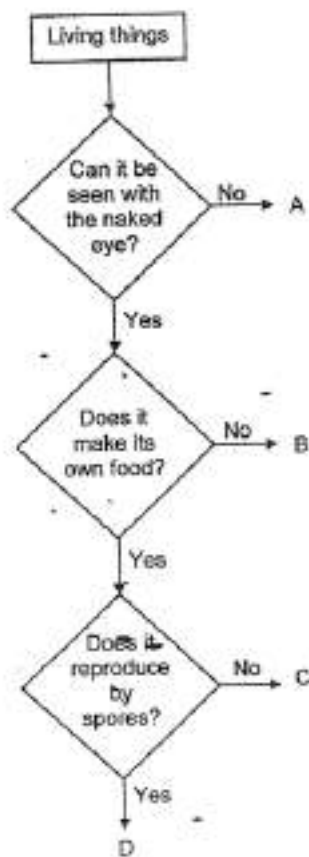
Remove From Test

Question 11

Primary 4 Science » Primary 4 Science (Term 4)

2 pts

Study the chart below.



Which one of the following correctly identifies A, B, C and D?

	A	B	C	D
(1)	bacteria	mushroom	rose	bird's nest fern
(2)	bracket fungi	bread mould	mushroom	moss
(3)	bread mould	hibiscus	moss	bird's nest fern
(4)	bacleria	bracket fungi	hibiscus	rose

- ✓ A) 1
 B) 2
 C) 3

D) 4

Question Type: Multiple Choice
Randomize Answers: No
Date Added: Wed 2nd Dec 2020
Last Modified: N/A
QID#: 25,182,695

[Answers](#) | [Edit](#) | [Duplicate](#) | [Used In](#) | [Reorder](#)

[Remove From Test](#)





Question 12

Primary 4 Science » Primary 4 Science (Term 4)

2 pts

Dennis conducted an experiment to find out more about bread mould. He took four similar slices of bread, A, B, C and D, and added different amounts of water on bread B, C and D. They were all placed in sealed bags on the dining table.

The amount of bread mould growing on them was recorded in the table below after 8 days.

	Bread A	Bread B	Bread C	Bread D
Amount of water added to the bread (ml)	0	10	20	5
Amount of bread mould observed	None	3 patches	6 patches	1 patch
				

Dennis made the following statements based on his observations.

- P Bread mould needs water to grow.
- Q Bread mould grows better in bags.
- R Bread mould grows faster when there is more water.

Which of the statements above is/are correct?

- A) R only
- B) P and Q only
- ✓ C) P and R only
- D) P, Q and R

Question Type: Multiple Choice
Randomize Answers: No
Date Added: Wed 2nd Dec 2020
Last Modified: N/A
QID#: 25,182,699

[Answers](#) | [Edit](#) | [Duplicate](#) | [Used In](#) | [Reorder](#)

[Remove From Test](#)

Question 13

Primary 4 Science » Primary 4 Science (Term 4)

2 pts

To keep the floor dry in a building on a rainy day, people entering the building are to keep their wet umbrellas in umbrella bags placed at the entrance as shown in the diagram below.



What are the two most important properties the umbrella bag must have to best serve this purpose?

- A flexible
- B waterproof
- C able to float
- D allows most light to pass through

- ✓ A) A and B only
- B) A and D only
- C) B and C only
- D) C and D only

Question Type: Multiple Choice
Randomize Answers: No
Date Added: Wed 2nd Dec 2020
Last Modified: N/A
QID#: 25,182,709

[Answers](#) | [Edit](#) | [Duplicate](#) | [Used In](#) | [Reorder](#)

[Remove From Test](#)

Question 14

Primary 4 Science » Primary 4 Science (Term 4)

2 pts

Some children were discussing about the human digestive system.
 Peter: Digestion of food starts in the stomach only
 Jenny: Chewing our food is part of the digestion process
 Mary: The digestive system only breaks down food but not absorb food

Who made the correct statement(s)?

- ✓ A) Jenny
- B) Peter and Mary
- C) Mary and Jenny
- D) Peter, Mary and Jenny

Question Type: Multiple Choice
Randomize Answers: No
Date Added: Wed 2nd Dec 2020
Last Modified: N/A
QID#: 25,182,725

[Answers](#) | [Edit](#) | [Duplicate](#) | [Used In](#) | [Reorder](#)

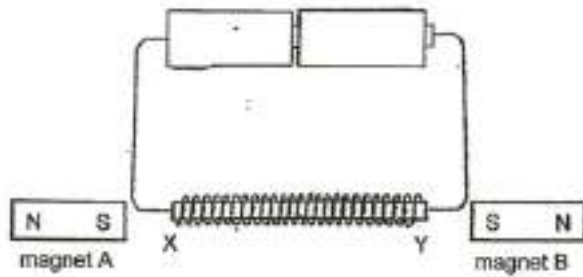
[Remove From Test](#)

Question 15

Primary 4 Science » Primary 4 Science (Term 4)

2 pts

Janet magnetised an iron rod XY as shown in the diagram below.



She observed that magnet A was attracted to the iron rod at point X while magnet B was repelled from the iron rod at point Y.

Based on Janet's observation, what would the poles X and Y of the iron rod be when it was magnetised?

	X	Y
(1)	North	South
(2)	North	North
(3)	South	North
(4)	South	South

- ✓ A) 1
B) 2
C) 3
D) 4

Question Type: Multiple Choice
Randomize Answers: No
Date Added: Wed 2nd Dec 2020
Last Modified: N/A
QID#: 25,182,738

[Answers](#) | [Edit](#) | [Duplicate](#) | [Used In](#) | [Reorder](#)

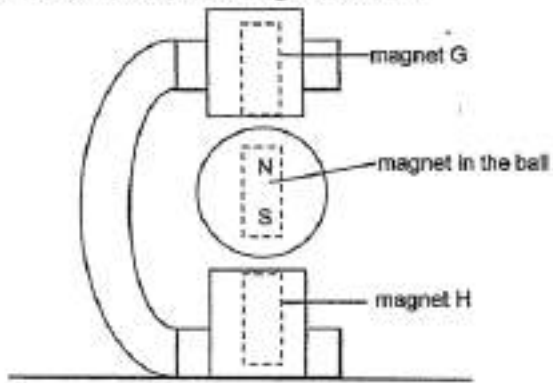
[Remove From Test](#)

Question 16

Primary 4 Science » Primary 4 Science (Term 4)

2 pts

The diagram below shows a toy that makes use of magnets. A ball with a magnet in it floats in between two magnets G and H.



How should the magnets G and H be placed for the ball to float?

	magnet G	magnet H
(1)	N S	N S
(2)	N S	S N
(3)	S N	S N
(4)	S N	N S

- A) 1
 B) 2
 ✓ C) 3
 D) 4

Question Type: Multiple Choice
Randomize Answers: No
Date Added: Wed 2nd Dec 2020
Last Modified: N/A
QID#: 25,182,744

[Answers](#) | [Edit](#) | [Duplicate](#) | [Used In](#) | [Reorder](#)

[Remove From Test](#)

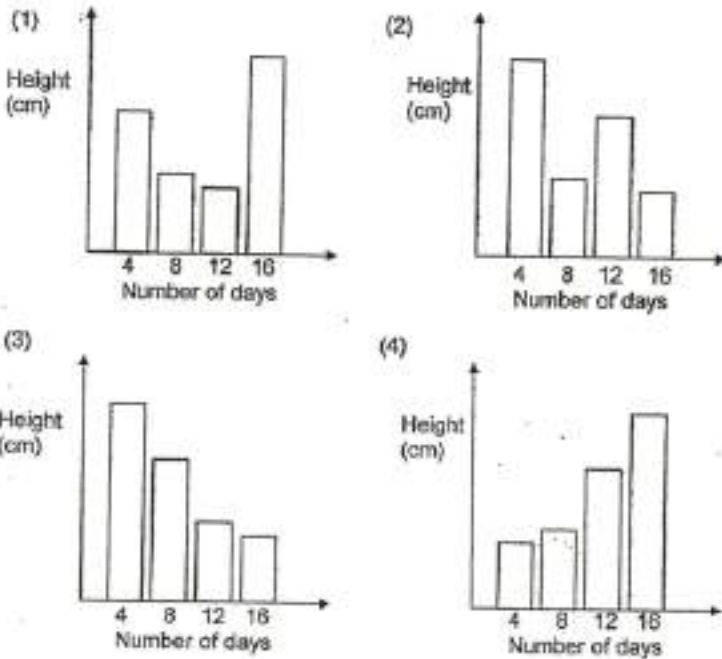
Question 17

Primary 4 Science » Primary 4 Science (Term 4)

2 pts

Daryl grew some green bean seeds in a cup and placed it near a window. He then measured the height of the seedlings every four days.

Which one of the following graphs best represents the height of the seedlings over 16 days?



- A) 1
- B) 2
- C) 3
- ✓ D) 4

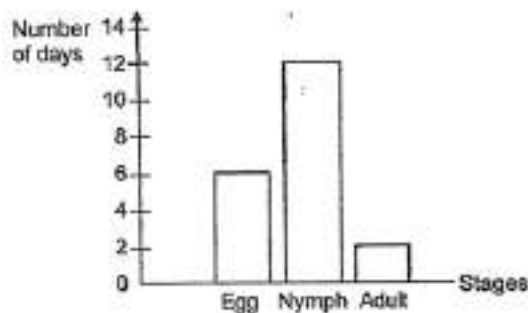
Question Type: Multiple Choice
 Randomize Answers: No
 Date Added: Wed 2nd Dec 2020
 Last Modified: N/A
 QID#: 25,182,749

[Answers](#) |
 [Edit](#) |
 [Duplicate](#) |
 [Used In](#) |
 [Reorder](#)
[Remove From Test](#)

Question 18

Primary 4 Science » Primary 4 Science (Term 4) 2 pts

The graph below shows the length of each stage in the life cycle of an insect.



How many days would it take for the insect to become an adult after the egg is laid?

- A) 6
- B) 12
- ✓ C) 18
- D) 20

Question Type: Multiple Choice
Randomize Answers: No
Date Added: Wed 2nd Dec 2020
Last Modified: N/A
QID#: 25,182,756

[Answers](#) | [Edit](#) | [Duplicate](#) | [Used In](#) | [Reorder](#)

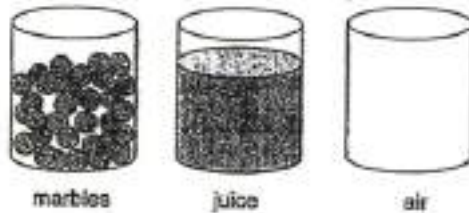
[Remove From Test](#)

Question 19

Primary 4 Science » Primary 4 Science (Term 4)

2 pts

Three identical glasses contained the following objects.



A jug of water was poured into each glass at the same time.

In what order, from first to last, would the water overflow?

	First	→	Last
(1)	air		marbles
(2)	marbles		air
(3)	juice		air
(4)	marbles		juice

- A) 1
- B) 2
- ✓ C) 3
- D) 4

Question Type: Multiple Choice
Randomize Answers: No
Date Added: Wed 2nd Dec 2020
Last Modified: N/A
QID#: 25,182,761

[Answers](#) | [Edit](#) | [Duplicate](#) | [Used In](#) | [Reorder](#)

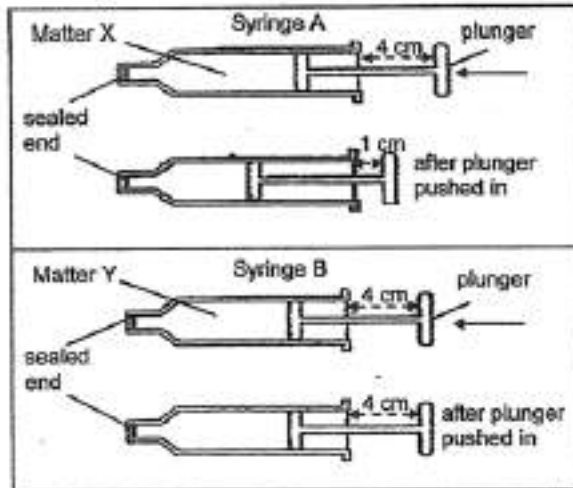
[Remove From Test](#)

Question 20

Primary 4 Science » Primary 4 Science (Term 4)

2 pts

Abdul prepared two identical syringes, A and B, each containing different types of matter, X and Y.



Abdul tried pushing the plunger in each syringe and observed what happened. He recorded the distance moved by each syringe in the table below.

Syringe	Distance moved by plunger (cm)
A	3
B	0

Which one of the following correctly identifies X and Y?

	X	Y
(1)	oil	sand
(2)	rice	oxygen
(3)	air	milk
(4)	water	sugar

- A) 1
 B) 2
 ✓ C) 3
 D) 4

Question Type: Multiple Choice
Randomize Answers: No
Date Added: Wed 2nd Dec 2020
Last Modified: N/A
QID#: 25,182,765

[Answers](#) | [Edit](#) | [Duplicate](#) | [Used In](#) | [Reorder](#)

[Remove From Test](#)

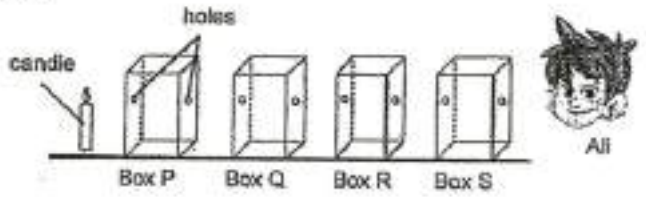
Question 21

Primary 4 Science » Primary 4 Science (Term 4)

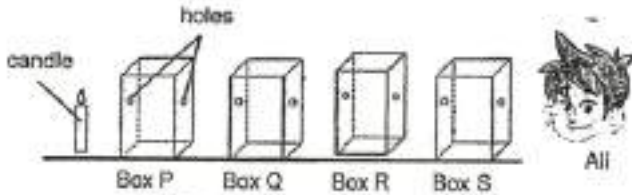
2 pts

All conducted an experiment in a dark room. He placed four wooden boxes with holes, P, Q, R and S, in a straight line on a table as shown below.

When the candle was lighted, All could see the light through the hole in Box S.



All moved Box R such that it was no longer in line with the rest. He realised that he could no longer see the light through the hole in Box S.



Which one of the following statements best explains his observations?

- A) Light can be reflected
- ✓ B) Light travels in a straight line
- C) Light cannot pass through small holes
- D) Light is reflected off the box in other directions

Question Type: Multiple Choice
Randomize Answers: No
Date Added: Wed 2nd Dec 2020
Last Modified: N/A
QID#: 25,182,776

[Answers](#) | [Edit](#) | [Duplicate](#) | [Used In](#) | [Reorder](#)

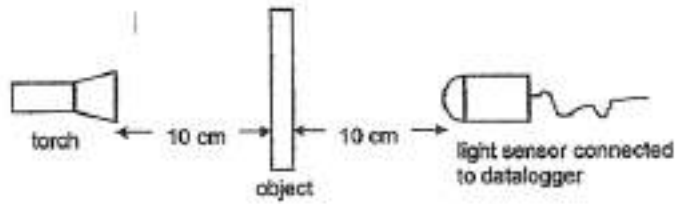
[Remove From Test](#)

Question 22

Primary 4 Science » Primary 4 Science (Term 4)

2 pts

Gopal set up an experiment as shown below. He placed object A 10 cm away from the torch and the light sensor 10 cm away from the object.



He repeated the same experiment using objects, B, C and D. The four objects, A, B, C and D, were similar in size and thickness, but were made of different materials. He recorded the amount of light detected by the light sensor in the table below.

Object	Amount of light detected by light sensor (units)
A	0
B	425
C	150
D	259

What was the aim of Gopal's experiment?

- A) To find out how the thickness of the object affects the amount of light passing through
- B) To find out how the amount of light passing through the object affects the materials used
- ✓ C) To find out how the materials used affects the amount of light passing through the object
- D) To find out how the position of the light source affects the amount of light passing through the object

Question Type: Multiple Choice
 Randomize Answers: No
 Date Added: Wed 2nd Dec 2020
 Last Modified: N/A
 QID#: 25,182,800

[Answers](#) | [Edit](#) | [Duplicate](#) | [Used In](#) | [Reorder](#)

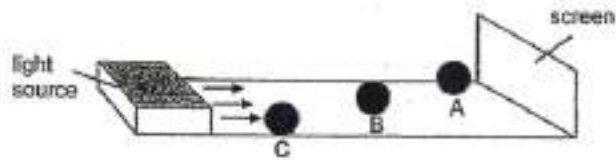
[Remove From Test](#)

Question 23

Primary 4 Science » Primary 4 Science (Term 4)

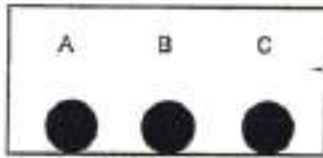
2 pts

The diagram below shows three identical balls, A, B and C, placed at different distances in front of a screen. A light source was switched on and the shadows of the balls were cast on the screen.



Assuming the balls do not block one another, which one of the following diagrams correctly shows the shadows of the balls, A, B and C, on the screen?

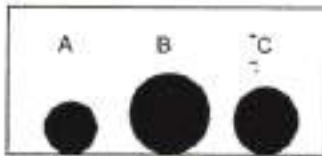
(1)



(2)



(3)



(4)



- A) 1
 B) 2
 C) 3
 D) 4

Question Type: Multiple Choice
Randomize Answers: No
Date Added: Wed 2nd Dec 2020
Last Modified: N/A
QID#: 25,182,809

[Answers](#) | [Edit](#) | [Duplicate](#) | [Used In](#) | [Reorder](#)

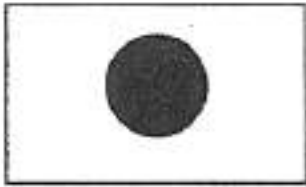
[Remove From Test](#)

Question 24

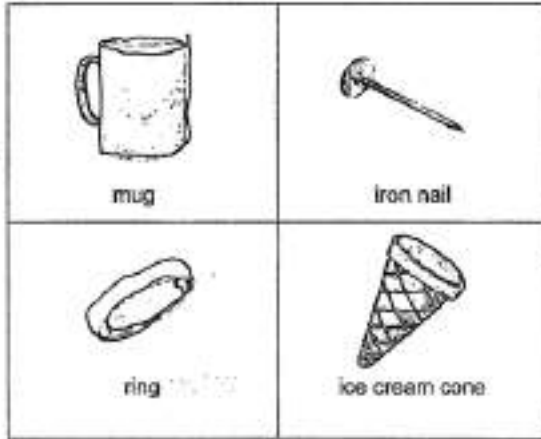
Primary 4 Science » Primary 4 Science (Term 4)

2 pts

The diagram below shows a shadow formed on a screen.



Which of the following could not have formed the shadow shown above?



- ✓ A) ring and mug
- B) mug and iron nail
- C) ice cream cone and ring
- D) iron nail and ice cream cone

Question Type: Multiple Choice
Randomize Answers: No
Date Added: Wed 2nd Dec 2020
Last Modified: N/A
QID#: 25,182,819

[Answers](#) |
 [Edit](#) |
 [Duplicate](#) |
 [Used In](#) |
 [Reorder](#)

[Remove From Test](#)

Question 25

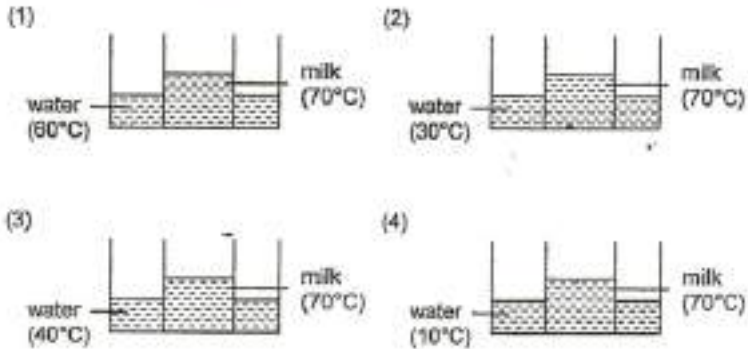
Primary 4 Science » Primary 4 Science (Term 4)

2 pts

Nancy poured some hot milk into a cup as shown below. She wanted to keep her milk hot for as long as possible.



Which one of the following arrangements is the best method to keep the milk hot for the longest time?



- ✓ A) 1
- B) 2
- C) 3
- D) 4

Question Type: Multiple Choice
Randomize Answers: No
Date Added: Wed 2nd Dec 2020
Last Modified: N/A
QID#: 25,182,828

[Answers](#) | [Edit](#) | [Duplicate](#) | [Used In](#) | [Reorder](#)

[Remove From Test](#)

Question 26

Primary 4 Science » Primary 4 Science (Term 4)

2 pts

Some ice cubes are put into a glass of drink. The ice cubes melt after a while.



How does adding ice cubes make the drink colder?

- A) The ice cubes melt so there is more drink
- ✓ B) The ice cubes gain heat from the drink as they melt
- C) The heat from the ice cubes moves to the drink as they melt
- D) The heat from the ice cubes moves to the glass holding the drink

Question Type: Multiple Choice
Randomize Answers: No
Date Added: Wed 2nd Dec 2020
Last Modified: N/A
QID#: 25,182,841

[Answers](#) | [Edit](#) | [Duplicate](#) | [Used In](#) | [Reorder](#)

[Remove From Test](#)

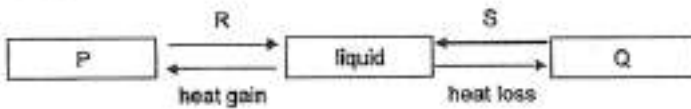
Question 27

Primary 4 Science » Primary 4 Science (Term 4)

2 pts

Matter can exist in three states, solid, liquid or gas, depending on the temperature.

The diagram below shows how matter can change from one state to another.



What could P, Q, R and S be?

	P	Q	R	S
(1)	gas	solid	heat gain	heat loss
(2)	solid	gas	heat gain	heat loss
(3)	solid	gas	heat loss	heat gain
(4)	gas	solid	heat loss	heat gain

- A) 1
 B) 2
 C) 3
 D) 4

Question Type: Multiple Choice
Randomize Answers: No
Date Added: Wed 2nd Dec 2020
Last Modified: N/A
QID#: 25,182,852

[Answers](#) | [Edit](#) | [Duplicate](#) | [Used In](#) | [Reorder](#)

[Remove From Test](#)

Question 28

Primary 4 Science » Primary 4 Science (Term 4)

2 pts

- 5 Joe carried out an experiment to find out how well different materials reduce heat loss.

He wrapped three identical empty drink cans in different materials. He then put equal amounts of water at 50°C into each can.



After five minutes, he measured the temperature of the water and recorded it in the table below.

Material	Temperature of water after five minutes (°C)
A	39
B	45
C	42

Which one of the following lists the materials from the most effective at reducing heat loss to the least effective?

- ✓ A) B, C, A
 B) B, A, C
 C) C, B, A
 D) A, C, B

Question Type: Multiple Choice
Randomize Answers: No
Date Added: Wed 2nd Dec 2020
Last Modified: N/A
QID#: 25,182,865

[Answers](#) | [Edit](#) | [Duplicate](#) | [Used In](#) | [Reorder](#)

[Remove From Test](#)

Question 29

Primary 4 Science » Primary 4 Science (Term 4)

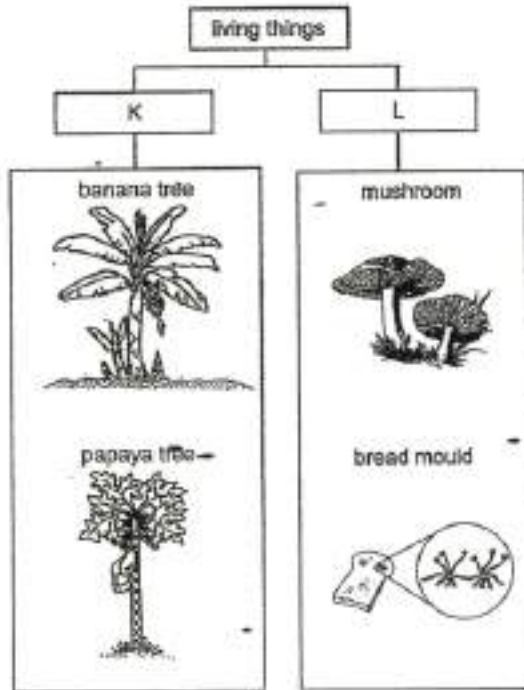
1 pt

Booklet B

This section is designed for extended answers that parent/ teacher will have to assign and guide child to attempt after the test has been completed.

Grading: This question type is not graded on this system and will not affect the final score as it was designed in such a way that it requires manual assistance.

Study the chart below.



Choose the correct words from the box to give suitable headings for K and L.

K: _____

- ✓ A) flowering plants
- B) non-flowering plants
- C) bacteria
- D) fungi

Question Type: Multiple Choice
Randomize Answers: No
Date Added: Wed 2nd Dec 2020
Last Modified: N/A
QID#: 25,182,879

[Answers](#) | [Edit](#) | [Duplicate](#) | [Used In](#) | [Reorder](#)

[Remove From Test](#)

Question 30

Primary 4 Science » Primary 4 Science (Term 4)

1 pt

L: _____

- A) flowering plants
- B) non-flowering plants
- C) bacteria
- ✓ D) fungi

Question Type: Multiple Choice
Randomize Answers: No
Date Added: Wed 2nd Dec 2020
Last Modified: N/A
QID#: 25,182,882

[Answers](#) | [Edit](#) | [Duplicate](#) | [Used In](#) | [Reorder](#)[Remove From Test](#)

Question 31

Primary 4 Science » Primary 4 Science (Term 4)

1 pt

Mary places a magnet near an iron rod and the iron rod moves towards the magnet.



(a) The magnet exerts a _____ on the iron rod.

[1]

Accepted answers:

- ✓ attract
- ✓ Attraction

Question Type: Free Text
Date Added: Wed 2nd Dec 2020
Last Modified: N/A
QID#: 25,182,899

[Answers](#) | [Edit](#) | [Duplicate](#) | [Used In](#) | [Reorder](#)[Remove From Test](#)

Question 32

Primary 4 Science » Primary 4 Science (Term 4)

1 pt

Mary's observation shows that iron is a ____ material.

- A) strong
- ✓ B) magnetic
- C) flexible

Question Type: Multiple Choice
Randomize Answers: No
Date Added: Wed 2nd Dec 2020
Last Modified: N/A
QID#: 25,182,911

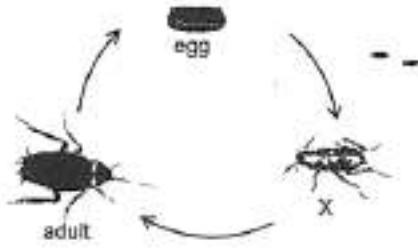
[Answers](#) | [Edit](#) | [Duplicate](#) | [Used In](#) | [Reorder](#)[Remove From Test](#)

Question 33

Primary 4 Science » Primary 4 Science (Term 4)

1 pt

The diagram below shows the stages in the life cycle of a cockroach.



(a) Name stage X.

Accepted answers:

✓ nymph

Question Type: Free Text
Date Added: Wed 2nd Dec 2020
Last Modified: N/A
QID#: 25,182,915

[Answers](#) | [Edit](#) | [Duplicate](#) | [Used In](#) | [Reorder](#)

[Remove From Test](#)

Question 34

Primary 4 Science » Primary 4 Science (Term 4)

1 pt

State one other animal that has similar life cycle as a cockroach.

Accepted answers:

✓ grasshopper

Question Type: Free Text
Date Added: Wed 2nd Dec 2020
Last Modified: N/A
QID#: 25,182,921

[Answers](#) | [Edit](#) | [Duplicate](#) | [Used In](#) | [Reorder](#)

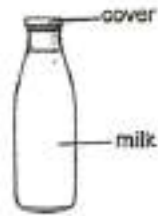
[Remove From Test](#)

Question 35

Primary 4 Science » Primary 4 Science (Term 4)

1 pt

The diagram below shows a bottle of milk.



Complete the sentences to state if the parts are solid, liquid or gas.

- (a) The cover is a _____.

Accepted answers:

✓ solid

Question Type: Free Text
Date Added: Wed 2nd Dec 2020
Last Modified: N/A
QID#: 25,182,927

[Answers](#) | [Edit](#) | [Duplicate](#) | [Used In](#) | [Reorder](#)

[Remove From Test](#)

Question 36

Primary 4 Science » Primary 4 Science (Term 4)

1 pt

Milk is a ____

Accepted answers:

✓ liquid

Question Type: Free Text
Date Added: Wed 2nd Dec 2020
Last Modified: N/A
QID#: 25,182,933

[Answers](#) | [Edit](#) | [Duplicate](#) | [Used In](#) | [Reorder](#)

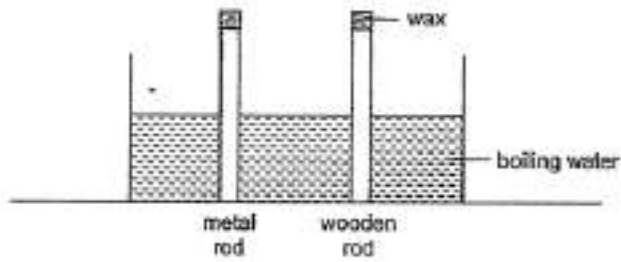
[Remove From Test](#)

Question 37

Primary 4 Science » Primary 4 Science (Term 4)

1 pt

James placed a metal rod and a wooden rod into a tank of boiling water as shown below. Equal amounts of wax were put on both rods.



What would he observe and why? (2)

The wax on the metal rod melted _____ than the wax on the wooden rod as metal is a _____ conductor of heat than wood.

Accepted answers:

- ✓ faster, better
- ✓ faster,better
- ✓ faster , better
- ✓ faster ,better
- ✓ faster better

Question Type: Free Text
 Date Added: Wed 2nd Dec 2020
 Last Modified: N/A
 QID#: 25,182,947

[Answers](#) | [Edit](#) | [Duplicate](#) | [Used In](#) | [Reorder](#)

[Remove From Test](#)

Question 38

Primary 4 Science » Primary 4 Science (Term 4)

2 pts

Some children wanted to find out which material keeps a drink hot for the longest period of time. They filled three containers, A, B and C, with hot water. They placed them in the same place.



What other variables must be kept the same for the experiment to be fair? Put a tick (✓) in the correct boxes.

- ✓ A) Size of containers
- ✓ B) volume of water in containers
- C) material of containers
- D) final temperature of water in containers

Question Type: Multiple Response
Randomize Answers: No
Grade style: Full points if all answers are correct
Date Added: Wed 2nd Dec 2020
Last Modified: N/A
QID#: 25,183,055

[Answers](#) | [Edit](#) | [Duplicate](#) | [Used In](#) | [Reorder](#)

[Remove From Test](#)

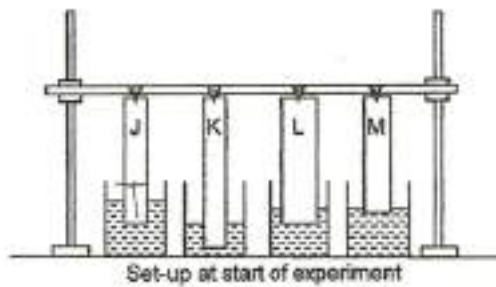
Question 39

Primary 4 Science » Primary 4 Science (Term 4)

0 pts

Sheela hung four different strips of material, J, K, L and M, each with different thickness from the same height. The ends of the four strips of material were dipped in four similar containers of water.

She wanted to find out which material absorbs the most water after ten minutes.



However, Sheela's classmates said that she had not conducted a fair test.

Besides the length and width of the materials, write down two other changes that Sheela should make in order for her experiment to be fair.

Change 1: _____

Change 2: _____

Question Type: Essay
Date Added: Wed 2nd Dec 2020
Last Modified: N/A
QID#: 25,183,068

Correctly answered feedback

Change 1: Same amount of water

Change 2: Size, thickness and length of strips

Incorrectly answered feedback

Change 1: Same amount of water

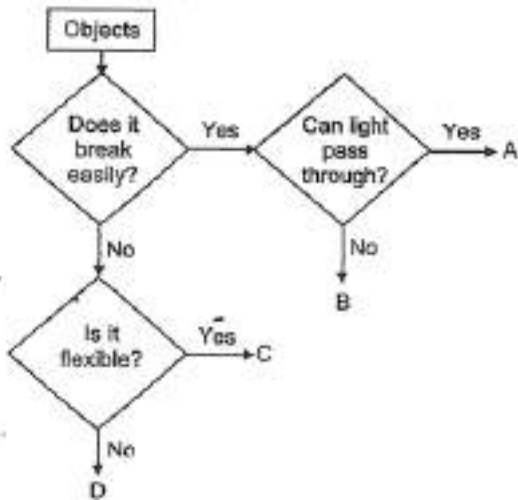
Change 2: Size, thickness and length of strips

Question 40

Primary 4 Science » Primary 4 Science (Term 4)

0 pts

Study the chart below.



(i) Based off the chart above, state the properties of object D [1]

Question Type: Essay
 Date Added: Wed 2nd Dec 2020
 Last Modified: N/A
 QID#: 25,183,076

Correctly answered feedback**It does not break easily and it is not flexible.****Incorrectly answered feedback****It does not break easily and it is not flexible.****Question 41**

Primary 4 Science » Primary 4 Science (Term 4)

1 pt

Name the material that object A can be made of

Accepted answers:

✓ glass

Question Type: Free Text
 Date Added: Wed 2nd Dec 2020
 Last Modified: N/A
 QID#: 25,183,084

[↗ Answers](#) |
 [✎ Edit](#) |
 [📄 Duplicate](#) |
 [📌 Used In](#) |
 [⚙ Reorder](#)

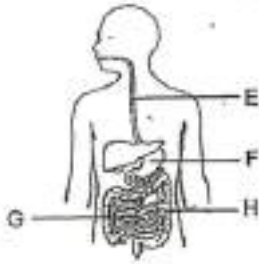
[Remove From Test](#)

Question 42

Primary 4 Science » Primary 4 Science (Term 4)

0.5 pts

The diagram below shows the human digestive system.



(a) Name the parts of the digestive system represented by F and H.

F: _____

Accepted answers:

✓ stomach

Question Type: Free Text
Date Added: Wed 2nd Dec 2020
Last Modified: N/A
QID#: 25,183,090

[↗ Answers](#) |
 [✎ Edit](#) |
 [📄 Duplicate](#) |
 [📌 Used In](#) |
 [⚙ Reorder](#)

[Remove From Test](#)

Question 43

Primary 4 Science » Primary 4 Science (Term 4)

0.5 pts

H: _____

Accepted answers:

✓ large intestine

Question Type: Free Text
Date Added: Wed 2nd Dec 2020
Last Modified: N/A
QID#: 25,183,096

[↗ Answers](#) |
 [✎ Edit](#) |
 [📄 Duplicate](#) |
 [📌 Used In](#) |
 [⚙ Reorder](#)

[Remove From Test](#)

Question 44

Primary 4 Science » Primary 4 Science (Term 4)

1 pt

In which part(s), E, F, G and H is/are digestive juices added?

- A) E
- ✓ B) F
- ✓ C) G
- D) H

Question Type: Multiple Response
Randomize Answers: No
Grade style: Full points if all answers are correct
Date Added: Wed 2nd Dec 2020
Last Modified: N/A
QID#: 25,183,103

[Answers](#) | [Edit](#) | [Duplicate](#) | [Used In](#) | [Reorder](#)

[Remove From Test](#)

Question 45

Primary 4 Science » Primary 4 Science (Term 4)

0 pts

Explain what happens at parts G and H.

Question Type: Essay
Date Added: Wed 2nd Dec 2020
Last Modified: N/A
QID#: 25,183,113

Correctly answered feedback

G: Digestion is complete, and food gets absorbed into the blood strea,

h: Water is absorbed from the undigested food

Incorrectly answered feedback

G: Digestion is complete, and food gets absorbed into the blood strea,

h: Water is absorbed from the undigested food

[Answers](#) | [Edit](#) | [Duplicate](#) | [Used In](#) | [Reorder](#)

[Remove From Test](#)

Question 46

Primary 4 Science » Primary 4 Science (Term 4)

2 pts

Jenny wanted to make a magnet using the electrical method.
Other than a battery, what other items would he need?

- ✓ A) iron rod
- B) aluminium rod
- ✓ C) copper wire
- D) eraser

Question Type: Multiple Response
Randomize Answers: No
Grade style: Full points if all answers are correct
Date Added: Wed 2nd Dec 2020
Last Modified: N/A
QID#: 25,183,132

Correctly answered feedback

iron rod, copper wire

[Answers](#) | [Edit](#) | [Duplicate](#) | [Used In](#) | [Reorder](#)

[Remove From Test](#)

Question 47

Primary 4 Science » Primary 4 Science (Term 4)

1 pt

When he tested the electromagnet that he had made, he had the following results.

	plastic clips	steel clips
Number of clips attracted	0	4

He re-constructed his electromagnet and tested again. The number of steel clips attracted increased. Predict the number of plastic clips attracted by writing your prediction in the table below. [1]

	plastic clips	steel clips
Number of clips attracted		8

Accepted answers:

- ✓ 0
- ✓ zero

Question Type: Free Text
Date Added: Wed 2nd Dec 2020
Last Modified: N/A
QID#: 25,183,138

[Answers](#) | [Edit](#) | [Duplicate](#) | [Used In](#) | [Reorder](#)

[Remove From Test](#)

Question 48

Primary 4 Science » Primary 4 Science (Term 4)

0 pts

Give a reason for your answer in (b)

Question Type: Essay
Date Added: Wed 2nd Dec 2020
Last Modified: N/A
QID#: 25,183,147

Correctly answered feedback

Plastic is a non-magnetic material so it will not get attracted.

Incorrectly answered feedback

Plastic is a non-magnetic material so it will not get attracted.

[Answers](#) | [Edit](#) | [Duplicate](#) | [Used In](#) | [Reorder](#)

[Remove From Test](#)

Question 49

Primary 4 Science » Primary 4 Science (Term 4)

0 pts

Without replacing any of the items or adding new items, suggest what he had done to the electromagnet in order to attract 8 steel clips.

Question Type: Essay
Date Added: Wed 2nd Dec 2020
Last Modified: N/A
QID#: 25,183,158

Correctly answered feedback

He added the number of coils to the magnet

Incorrectly answered feedback

He added the number of coils to the magnet

[Answers](#) | [Edit](#) | [Duplicate](#) | [Used In](#) | [Reorder](#)

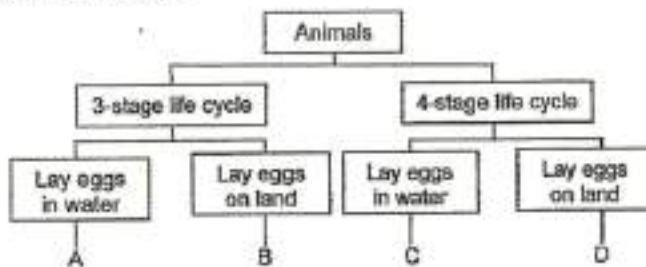
[Remove From Test](#)

Question 50

Primary 4 Science » Primary 4 Science (Term 4)

0 pts

Study the chart below.



(a) Based on the chart above, state one difference between animals B and D.

Question Type: Essay
Date Added: Wed 2nd Dec 2020
Last Modified: N/A
QID#: 25,183,171

Correctly answered feedback

Animal B has 3 stage life cycle while Animal D has 4

Incorrectly answered feedback

Animal B has 3 stage life cycle while Animal D has 4

[Answers](#) | [Edit](#) | [Duplicate](#) | [Used In](#) | [Reorder](#)

[Remove From Test](#)

Question 51

Primary 4 Science » Primary 4 Science (Term 4)

1 pt

Which animal, A, B, C or D represents a beetle?

- A) A
- B) B
- C) C
- ✓ D) D

Question Type: Multiple Choice
 Randomize Answers: No
 Date Added: Wed 2nd Dec 2020
 Last Modified: N/A
 QID#: 25,183,175

[Answers](#) | [Edit](#) | [Duplicate](#) | [Used In](#) | [Reorder](#)

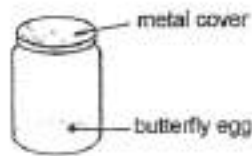
[Remove From Test](#)

Question 52

Primary 4 Science » Primary 4 Science (Term 4)

0 pts

Jack placed a butterfly egg in a sealed jar as shown. After one week, the egg hatched into a larva.



Give two suggestions how Jack can improve the above set-up to ensure that the butterfly larva survives after it hatches.

Suggestion 1 : _____

Suggestion 2 : _____

Question Type: Essay
 Date Added: Wed 2nd Dec 2020
 Last Modified: N/A
 QID#: 25,183,183

Correctly answered feedback

Suggestion 1: Remove the metal cover.
Suggestion 2: Add food and water into the jar.

Incorrectly answered feedback

Suggestion 1: Remove the metal cover.
Suggestion 2: Add food and water into the jar.

[Answers](#) | [Edit](#) | [Duplicate](#) | [Used In](#) | [Reorder](#)

[Remove From Test](#)

Question 53

Primary 4 Science » Primary 4 Science (Term 4)

0 pts

Justin conducted an experiment with two identical jars, X and Y, of capacity 300 cm^3 . Each jar contained 300 cm^3 of air.



He connected a pump to both jars as shown in the diagram below. He then pumped in another 100 cm^3 of air into Jar X. Both jars were then placed on a balance.



- (a) State what would happen to the balance after 100 cm^3 of air was pumped into Jar X. [1]

Question Type: Essay
Date Added: Wed 2nd Dec 2020
Last Modified: N/A
QID#: 25,183,195

Correctly answered feedback

Jar X will tip the scale as it has increased in mass

Incorrectly answered feedback

Jar X will tip the scale as it has increased in mass

[Answers](#) | [Edit](#) | [Duplicate](#) | [Used In](#) | [Reorder](#)

[Remove From Test](#)

Question 54

Primary 4 Science » Primary 4 Science (Term 4)

1 pt

What was the final volume of air in Jar X?

Accepted answers:

- ✓ 300cm3
- ✓ 300
- ✓ 300 cm3

Question Type: Free Text
Date Added: Wed 2nd Dec 2020
Last Modified: N/A
QID#: 25,183,204

[Answers](#) | [Edit](#) | [Duplicate](#) | [Used In](#) | [Reorder](#)

[Remove From Test](#)

Question 55

Primary 4 Science » Primary 4 Science (Term 4)

0 pts

(c) State two properties of air that are shown in the experiment above.

Property 1 : _____

Property 2 : _____

Question Type: Essay
 Date Added: Wed 2nd Dec 2020
 Last Modified: N/A
 QID#: 25,183,216

Correctly answered feedback

Property 1: Air has mass.
Property 2: Air can be compressed.

Incorrectly answered feedback

Property 1: Air has mass.
Property 2: Air can be compressed.

[Answers](#) | [Edit](#) | [Duplicate](#) | [Used In](#) | [Reorder](#)

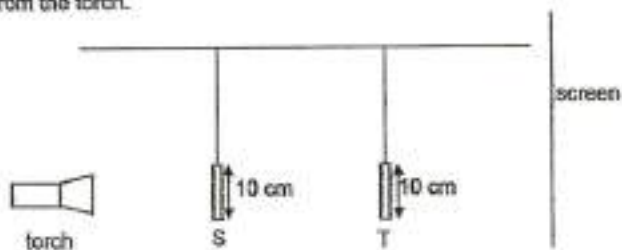
[Remove From Test](#)

Question 56

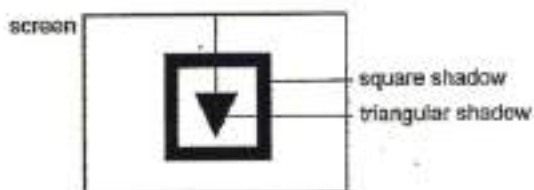
Primary 4 Science » Primary 4 Science (Term 4)

1 pt

The set-up below shows light from a torch shining on two shapes, S and T, made from thick cardboard. The shapes are placed at different distances from the torch.



The diagram below shows the shadow that was formed on the screen.



(a) Which shape, S or T, is a triangle?

- A) S
 B) T



Question Type: True False
Date Added: Wed 2nd Dec 2020
Last Modified: N/A
QID#: 25,183,226

[Answers](#) | [Edit](#) | [Duplicate](#) | [Used In](#) | [Reorder](#)

[Remove From Test](#)

Question 57

Primary 4 Science » Primary 4 Science (Term 4)

0 pts

Suggest one way to increase the size of the triangular shadow without changing the size of the square shadow. (You cannot add, remove or replace any one of the materials)

Question Type: Essay
Date Added: Wed 2nd Dec 2020
Last Modified: N/A
QID#: 25,183,240

Correctly answered feedback

Move T closer towards the torch

Incorrectly answered feedback

Move T closer towards the torch

[Answers](#) | [Edit](#) | [Duplicate](#) | [Used In](#) | [Reorder](#)

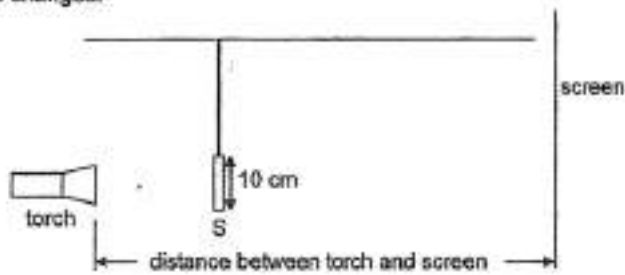
[Remove From Test](#)

Question 58

Primary 4 Science » Primary 4 Science (Term 4)

1 pt

Object T was removed and the distance between the torch and the screen was changed.



The height of the shadow formed on the screen was recorded in the table below.

Distance between torch and screen (cm)	Height of shadow (cm)
60	28
55	30
50	32
45	X
40	38

(c) Based on the table above, what could be the value of X?

Accepted answers:

✓ 34

Question Type: Free Text
Date Added: Wed 2nd Dec 2020
Last Modified: N/A
QID#: 25,183,248

[Answers](#) | [Edit](#) | [Duplicate](#) | [Used In](#) | [Reorder](#)

[Remove From Test](#)

Question 59

Primary 4 Science » Primary 4 Science (Term 4)

0 pts

Based on the table above, what is the relationship between the distance between the torch and the screen and the height of the shadow?

Question Type: Essay
Date Added: Wed 2nd Dec 2020
Last Modified: N/A
QID#: 25,183,262

Correctly answered feedback

As the distance between the torch and screen decreases, the height of the shadow increases

Incorrectly answered feedback

As the distance between the torch and screen decreases, the height of the shadow increases

[Answers](#) | [Edit](#) | [Duplicate](#) | [Used In](#) | [Reorder](#)

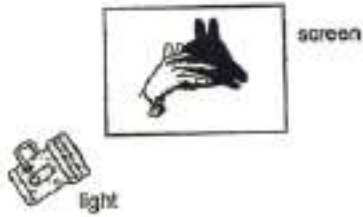
[Remove From Test](#)

Question 60

Primary 4 Science » Primary 4 Science (Term 4)

0 pts

- (a) Shawn wants to investigate if the size of his hand shadow will be affected by the distance of his hands from the light source as shown in the diagram below.



- (i) How is a shadow formed?

Question Type: Essay
Date Added: Wed 2nd Dec 2020
Last Modified: N/A
QID#: 25,183,273

Correctly answered feedback

When light is completely or partially blocked

Incorrectly answered feedback

When light is completely or partially blocked

[Answers](#) | [Edit](#) | [Duplicate](#) | [Used In](#) | [Reorder](#)

[Remove From Test](#)

Question 61

Primary 4 Science » Primary 4 Science (Term 4)

2 pts

What should Shawn do if he wants a bigger shadow?

- ✓ A) move the torch nearer to his hand
 B) move his hand nearer to the screen
 C) move the torch further away from his hand
 ✓ D) move his hand further away from the screen

Question Type: Multiple Response
Randomize Answers: No
Grade style: Full points if all answers are correct
Date Added: Wed 2nd Dec 2020
Last Modified: N/A
QID#: 25,183,296

[Answers](#) | [Edit](#) | [Duplicate](#) | [Used In](#) | [Reorder](#)

[Remove From Test](#)

Question 62

Primary 4 Science » Primary 4 Science (Term 4)

1 pt

Some toys are placed in a box. Shawn looks into the box from a distance.



Shawn



robot ball block bear

Which object(s) can Shawn see clearly?

[1]

- A) robot
- B) ball
- C) block
- ✓ D) bear

Question Type: Multiple Choice
Randomize Answers: No
Date Added: Wed 2nd Dec 2020
Last Modified: N/A
QID#: 25,183,308

[Answers](#) | [Edit](#) | [Duplicate](#) | [Used In](#) | [Reorder](#)

[Remove From Test](#)

Question 63

Primary 4 Science » Primary 4 Science (Term 4)

0 pts

Mike filled a jar with some water at a temperature of 90°C. He placed an ice cube into it as shown in the diagram below.



(a) Would the temperature of the water in the jar after five minutes be higher than, same as or lower than 90°C? Give a reason why.

[2]

Question Type: Essay
Date Added: Wed 2nd Dec 2020
Last Modified: N/A
QID#: 25,183,331

Correctly answered feedback

a) The water lost heat to the ice-cube and to the surrounding air.

[Answers](#) | [Edit](#) | [Duplicate](#) | [Used In](#) | [Reorder](#)

[Remove From Test](#)

Question 64

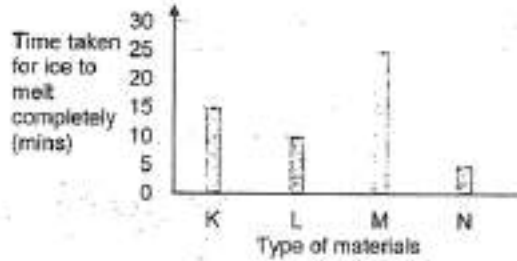
Primary 4 Science » Primary 4 Science (Term 4)

0 pts

- (b) Mike placed four similar ice cubes in four jars, K, L, M and N. The jars were of similar size but made of different materials. He left the jars on a table in the living room.



He recorded the time taken for the ice to melt completely and plotted the readings in the graph below.



Which material is most suitable to make an ice cream container so that the ice cream will not melt so quickly? Explain your answer. [2]

Question Type: Essay
 Date Added: Wed 2nd Dec 2020
 Last Modified: N/A
 QID#: 25,183,337

Correctly answered feedback

b) M. Material M is the poorest conductor of heat among all the materials. Thus, the ice cream will gain heat from the surrounding air slower.

Incorrectly answered feedback

b) M. Material M is the poorest conductor of heat among all the materials. Thus, the ice cream will gain heat from the surrounding air slower.

[Answers](#) | [Edit](#) | [Duplicate](#) | [Used In](#) | [Reorder](#)

[Remove From Test](#)